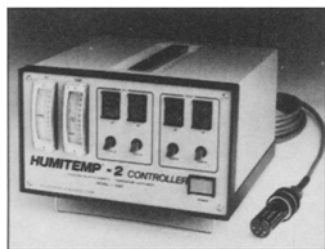


## New Products



### RH/TEMPERATURE

Phys-Chem Scientific's HUMITEMP-2 indicator/controller controls both relative humidity (RH) and temperature. The unit is designed to provide RH ( $\pm 2\%$ ) and temperature ( $\pm 0.5$  C) readings over the range of 10%–100% RH at operating temperatures between  $-5$  and  $+75$  C. Contact: Phys-Chem Scientific Corp., 36 W. 20th St., New York, NY 10011.

### VISCOSITY SENSOR

The Nametre Viscoliner is a streamlined sensor for fluid viscosity control. The instrument automatically displays viscosity from one-tenth to one million centipoise. It also is designed to measure temperature in the same region where the viscosity is measured. Other features include automatic temperature and density compensation. Contact: Nametre Co., 101 Forrest St., Metuchen, NJ 08840.

### TUBE FITTINGS

Parker Hannifin's 300 Series stainless steel grab rings and nitrile O-rings are designed to provide leakproof seals, even under vibration and tube movement conditions. The "Fast & Tite" tube fittings are available in polypropylene or nylon and are reusable. Contact: Parker Hannifin Corp., Parflex Division, Ravenna, OH, telephone 216-296-2871.

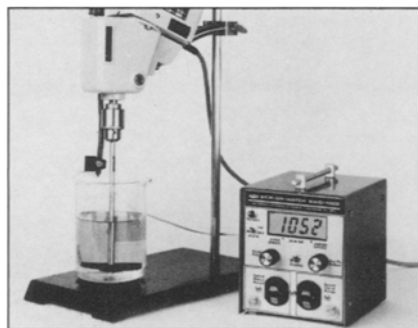
### PARTICLE ANALYZER

A particle size analyzer from Scientific Instruments & Technology Corp. uses a single laser light source and optical system to cover a particle size range of 0.3 to 1,100 microns (millimicrometers). Designed to operate with both dry

and wet particles, the analyzer presents data in histogram or surface area format. The instrument is driven from an IBM or equivalent personal computer and can be automatic or menu-driven. Contact: Scientific Instruments & Technology Corp., PO Box 6906, Piscataway, NJ 08854.

### FLASK SUPPORT

TILT-N-POUR from Instruments for Research and Industry supports large 12- and 22-liter round-bottom flasks without depending on a heating mantle. It is designed to permit pouring from the flask. The device uses cradle glass fiber webbing hung on a stainless steel frame and can be attached to any standard lab frame. Contact: Instruments for Research and Industry, 108 Franklin Ave., Cheltenham, PA 19012.



### LAB STIRRER MONITOR

Instruments for Research and Industry has developed a device, STIR-or-WATCH, to monitor the speed of electrical or air-driven lab stirrers. The unit is designed to warn of stirring malfunctions such as loose couplings, jammed bearings, power loss, broken or decoupled blades, changes in liquid viscosity and other problems that cause changes in shaft speed. It uses infrared, non-contact sensing to detect shaft rotation and to display speed. It can be used for speeds from 40 to 1,999 rpm. Contact: Instruments for Research and Industry, 108 Franklin Ave., Cheltenham, PA 19012.

### ENVIRONMENTAL CHAMBERS

Hotpack Corp. offers illuminated environmental chambers designed to automatically adjust temperature and light intensity. These have microprocessor-based controls and ultraviolet lights. The chambers are used for accelerated shelf-life testing and evaluating the effect of ultraviolet light on products. Chamber light intensity and temperature are variable and programmable to simulate diurnal cycling and environmental control. Temperature range is  $-20$  to  $+50$  C. Contact: Hotpack Corp., 10940 Dutton Rd., Philadelphia, PA 19154.

### REVERSE OSMOSIS

The OSMO RO system from Osmonics Inc. is designed to provide 350 to over 100,000 gallons per day of high purity water for use in meat and poultry processing plants, canneries and other food-processing facilities. It features stainless steel housings, a multi-stage centrifugal pump, automatic flushing and alarms and controls. It is skid-mounted and includes a clean-in-place system with separate pump to transfer the cleaning solution to the OSMO RO unit. Contact: OSMO Membrane Systems Division, Osmonics Inc., 5951 Clearwater Dr., Minnetonka, MN 55343.

### SOFTWARE PACKAGE

Systems/Services Engineering offers an enhanced version of its Total Operations Package software for water and wastewater treatment facilities. The package includes software for data management, facility maintenance, tool inventory, budget control, personnel files, industrial pretreatment, lab bench sheet records and lab stock inventory. Enhancements include built-in graphing capabilities, pull-down menus, direct data exchange with commercial products and built-in networking capability. Contact: Systems/Services Engineering, 3648 Eastern Dr., Dayton, OH 45432.